



Brunel
University
London

Brunel Online Postgraduate Health Programmes



Table of contents

Why Brunel?	3
Programme overview	4
Nana Anokye, Programme Lead	5
Programmes & modules	6-8
Life online with Brunel	9
Learning outcomes	10
Careers	11
Entry requirements	12
Start application	13

Why Brunel?

Brunel University London is ranked amongst the top 20 universities worldwide (4th in the UK) for international outlook (Times Higher Education World University Ranking 2023).

We aim to equip you to work internationally and address society's challenges on a global scale. Studying with Brunel, you will learn with passionate academics who are established experts in their fields, who are dedicated to helping you develop the hard and soft skills, academic skills and interpersonal skills needed to become a successful professional in today's competitive world in the real world.

Essential information



Start dates

January,
May,
September



Location

Online



Duration

1 year full-time,
2 years part-time



Fees

£6000
(Special reduced
fees for India, South/
East Asia & Africa)

Take control of your career. Make a difference.

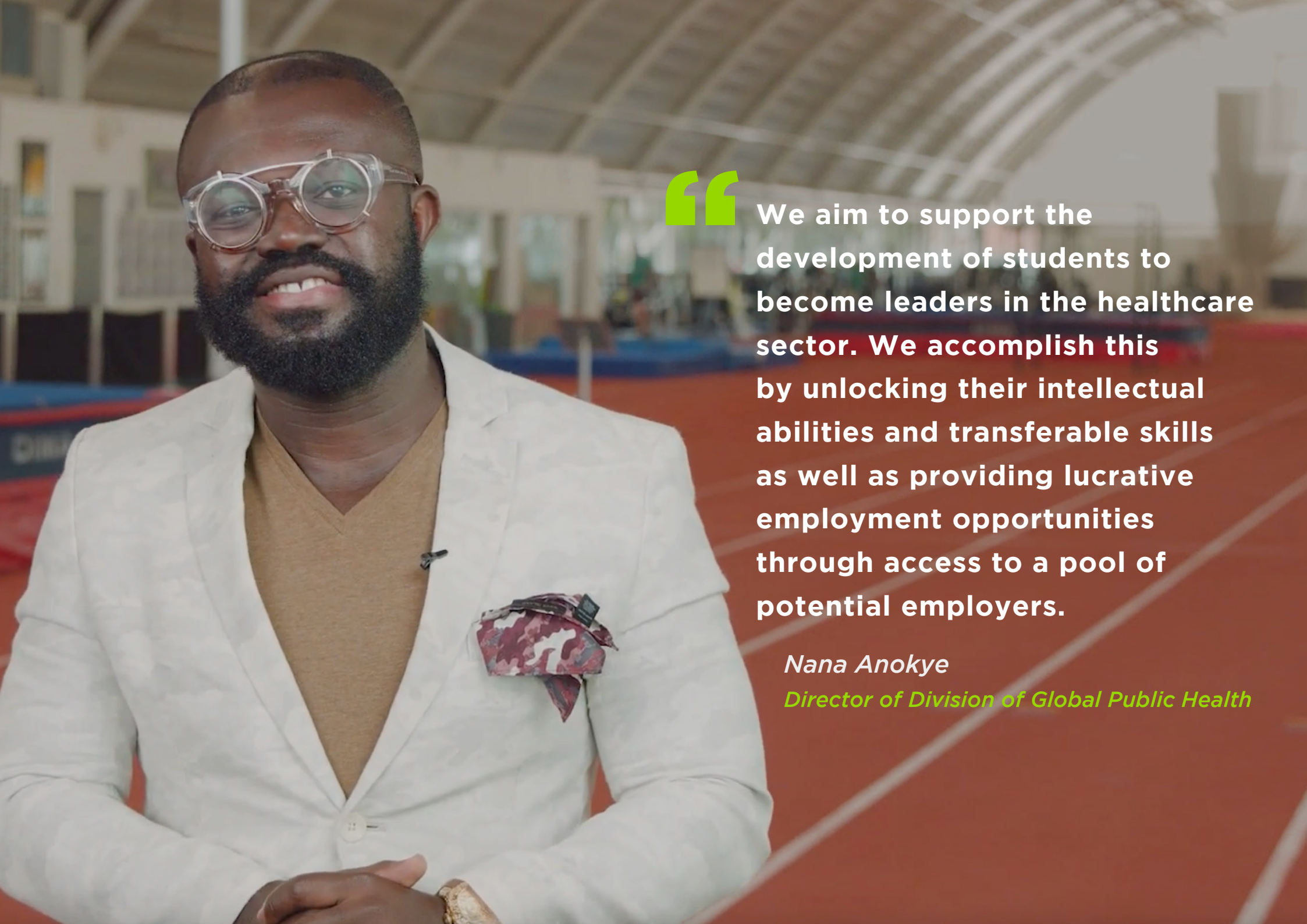
Accelerate your career with Brunel's Online Master's Programmes with guidance from world-renowned academics.

Brunel's Online Health Programmes have been designed to help ambitious professionals gain advanced skills and competencies in the healthcare/volunteering/medical/social sector. Brunel's Online Postgraduate Health Programmes will also help you acquire a multidisciplinary approach to understanding and solving contemporary health and social challenges by providing you with advanced knowledge of related areas including health promotion, global public health policy, politics, sociology, psychology, and research skills.

The flexible format for learning and teaching includes pre-recorded bitesize video content and asynchronous activities, which facilitates access to study at any time and in any place. Often, additional live classes are offered in different ways e.g. to help build a community, problem-solve, faculty office hours and small group / 1-1 project supervision.



Brunel's Online Master's Programmes MSc online gives you the chance to benefit from intensive teaching in a global context. These programmes are highly rated for their excellence in teaching and learning.



We aim to support the development of students to become leaders in the healthcare sector. We accomplish this by unlocking their intellectual abilities and transferable skills as well as providing lucrative employment opportunities through access to a pool of potential employers.

Nana Anokye

Director of Division of Global Public Health

Programmes and modules

Master of Public Health (MPH)	Global Public Health & Social Justice MSc	Public Health & Behaviour Change MSc	Public Health & Health Promotion MSc
Behaviour Change and Intervention Design	Epidemiology	Behaviour Change and Intervention Design	Epidemiology
Epidemiology	Global Public Health	Behavioural Medicine	Global Public Health
Global Public Health	Health Economics	Epidemiology	Health Economics
Health Economics	Health Policy, Politics and Social Justice	Global Public Health	Health Policy, Politics and Social Justice
Health Policy, Politics and Social Justice	Health and Society	Health and Society	Health Promotion
Health and Society	Leadership & Change for Global Health	Public Health Leadership	Health and Society
Public Health Leadership	Research Methods	Research Methods	Implementing Change in Public Health and Health Promotion
Research Methods	Social Justice and Health	Theories of Behaviour Change	Research Methods
Research Project - Dissertation	Research Project - Dissertation	Research Project - Dissertation	Research Project - Dissertation

Programmes and modules

Behaviour Change & Intervention Design

This module aims to identify the socio-cognitive factors that bridge the gap between public health and behaviour change by unfolding the determinants of behaviour change and understanding to create the logical model of change in health behaviours.

Global Public Health

This module focuses on population-based approaches to health and well-being. You will learn about the history and development of public health and examine global challenges in the field spanning a wide range of critical issues.

Health Policy, Politics and Social Justice

You will study political, policy, and ethical perspectives on public health promotion to understand to what extent societies can build effective public health institutions and systems to enhance health and well-being.

Behavioural Medicine

This module focuses on the influence of behaviour on health, requiring learners to demonstrate a critical understanding of the influences on individual, group and societal health. In particular there is a focus on biopsychosocial influences and learners will analyse the barriers and enablers to health behaviours.

Health Economics

This module explores the processes of evidence-based healthcare and how to communicate evidence of effectiveness and cost-effectiveness to a diverse group of stakeholders.

Health and Society

In this module, you will explore the social context of health and well-being, including the perceptions and experiences of health and illness, the social determinants of health status and the risks associated with public health and lifestyles.

Epidemiology

This module will develop students' critical knowledge and skills in principles, concept and theories of epidemiology.

Health Promotion

You will develop your understanding of the principles, perspectives, and the practice of public health, focusing on the promotion of physical, mental, and social health and well-being amongst individuals, groups, and communities.

Implementing Change

In this module, you will gain a problem-solving and multidisciplinary approach to healthcare and will examine case studies that highlight the complex nature of public health and health promotion.

Programmes and modules

Leadership & Change for Global Health

Students will understand how leadership theory applies in global public health, appraise how leaders use different strategies to improve performance and relate the role of leadership to designing, implementing and managing strategical organisational change.

Research Project - Dissertation

The dissertation is a self-directed project where you will examine a key issue in public health and health promotion.

Public Health Leadership

Leverage this module to enhance your understanding of leadership theories in public health that are deployed in all sectors of a society with a vision to generate a positive impact on the overall health index of the masses.

Social Justice & Health

This module is concerned with social justice issues (surrounding race/ethnicity, socioeconomic status, etc) and theories (e.g. feminism, critical race theory, etc) and involves researching and addressing health disparities relative to the social determinants of health.

Research Methods

This module will provide you with an overview of different approaches to research including qualitative research, quantitative research, and systematic reviews.

Theories of Behaviour Change

This module considers the strengths and weaknesses of multidisciplinary theoretical perspectives on how to change individual and societal behaviour, and identifies and solves the problems with implementing theory within behaviour change interventions.

Life online with Brunel



Gain globally sought-after skills

Developed by Industry experts & veterans, Brunel's Online Health Programs equips you with the skills sought by leading profit and non-profit organisations around the world.



Study from anywhere in the world

Geography is no longer a barrier to a world-class education. You can attain your MSc entirely online while travelling or working.



Diverse career options

Graduates of the course are equipped to enter a wide range of careers in health and social care, local government, education and the voluntary sectors.



Fit your study around your life

No more juggling work or family commitments because of your academic obligations. You can access our online platform anytime, anywhere.



Networking opportunities

Studying online, you'll get to meet fellow students, professionals, and academics worldwide - building connections through the course that will last a lifetime.



Learn entirely online

Without leaving your country or stopping your career, you will study fully online with all of the support, resources, and energy of a campus programme.

Learning outcomes



Understand the scope and nature of contemporary Healthcare and overall wellness at local, national, and global levels.



Understand the principles and complexities of using evidence, including researching, analysing, and evaluating health information and policy.



Gain a deep awareness of the major determinants of health and learn how to promote wellness in a way that addresses social and economic inequalities and promotes values of social justice.



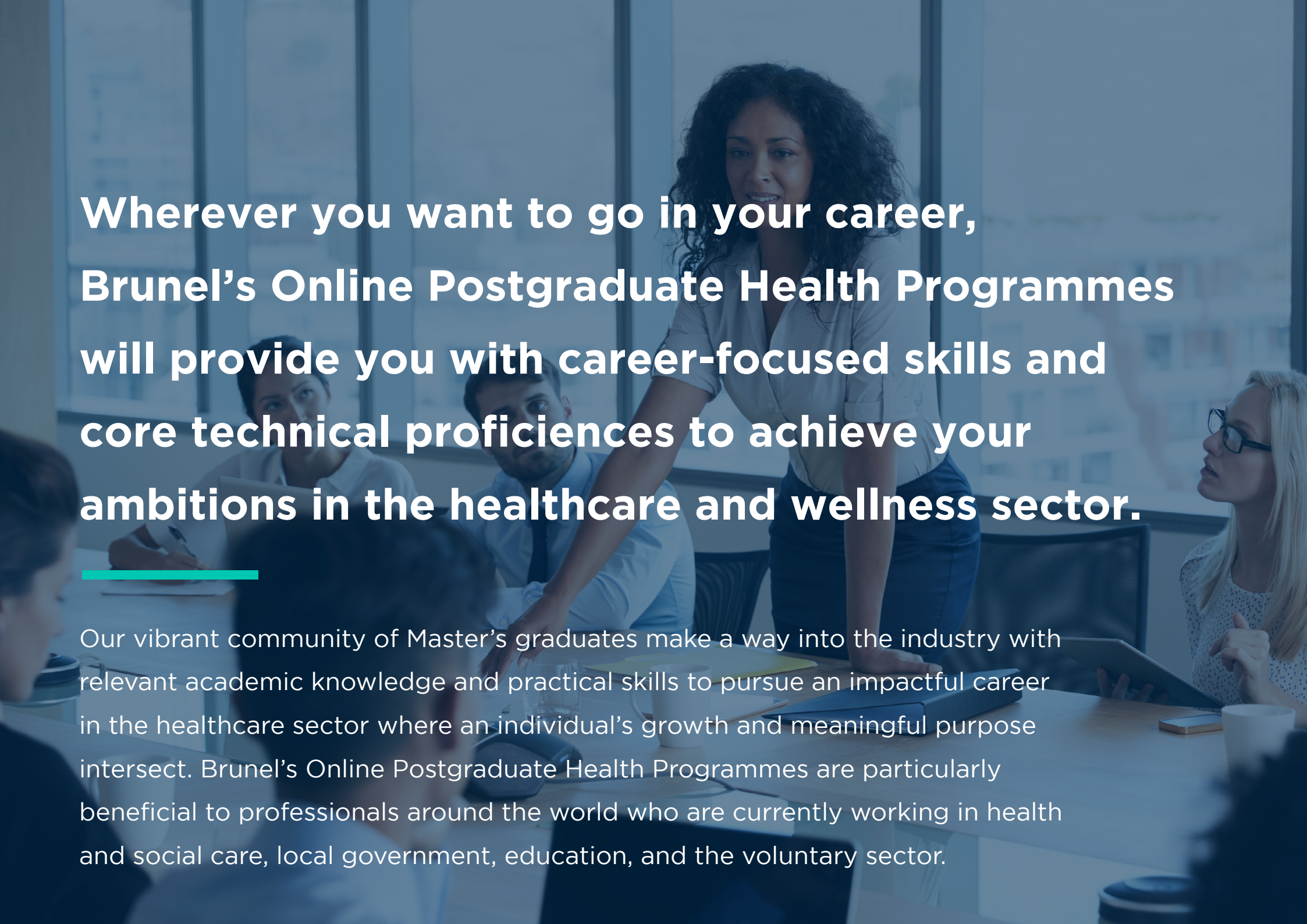
Appreciate the ethical, political, societal, and cultural dilemmas that arise in the Health sector & social sector.



Grasp the academic knowledge and industry-relevant skills in reflective practice, research, communication, and learn to work in a dynamic team culture.



Gain a critical understanding of principles of leadership and the different strategies to influence others to enhance performance. Understand negotiation and mediation plans to address global, organisational or community challenges.

A woman with dark curly hair, wearing a light-colored short-sleeved shirt and dark trousers, stands in the center of a meeting room. She is leaning forward, pointing at a document on a table. Several other people are seated around the table, looking towards her. The room has large windows in the background, and the overall lighting is soft and professional. The text is overlaid on the image in a white, bold, sans-serif font.

**Wherever you want to go in your career,
Brunel's Online Postgraduate Health Programmes
will provide you with career-focused skills and
core technical proficiencies to achieve your
ambitions in the healthcare and wellness sector.**

Our vibrant community of Master's graduates make a way into the industry with relevant academic knowledge and practical skills to pursue an impactful career in the healthcare sector where an individual's growth and meaningful purpose intersect. Brunel's Online Postgraduate Health Programmes are particularly beneficial to professionals around the world who are currently working in health and social care, local government, education, and the voluntary sector.

Entry requirements

A UK Bachelor's degree (minimum 2:2) in Public Health, Health Promotion or a relevant subject, or an international equivalent.

Relevant subjects include the following:

Public Health, Health Studies, Medicine, Healthcare (Nursing), Occupational Therapy, Physiotherapy, Social Sciences, Human Sciences, Sociology/Psychology, Sciences: Biology, Nutrition, Pharmacy, Social Work, Environmental Health, Sports Degrees, Social Policy, Health Education, Biosciences, Allied Health, Nursing, Midwifery, Medical Sciences, Sport Sciences, Environmental Sciences, Social Justice & Health, Leadership & Change for Global Health, Behavioural Medicine, Public Health Leadership.

If your existing qualifications do not meet the criteria above, we invite applications if you hold any of the requirements below, which will be assessed on a case by case basis:

- A UK Bachelor's degree (minimum 2:2) or international equivalent in a subject not listed above.
- A non-degree qualification (e.g. a diploma) and 5 years' relevant work experience.
- A UK bachelor's degree below 2.2, or an international equivalent, and two 2 years' relevant work experience.

Application documents

- #1 A completed application form
- #2 Scanned copies of your education certificates and transcripts
- #3 Your CV/résumé in English
- #4 Proof of English proficiency

Brunel Online Postgraduate Health Programmes

Advanced skills for ambitious professionals.

START MY APPLICATION

Master of Public
Health (MPH)

Public Health &
Health Promotion MSc

Public Health &
Behaviour Change MSc

Global Public Health &
Social Justice MSc

[\(+44\) 203 535 1404](tel:+442035351404) • study@online.brunel.ac.uk

The information in this brochure is correct at the time of publication. It is issued for the general guidance of students starting their online course with the University in September 2021 and does not form part of any contract. The University will use all reasonable endeavours to deliver the course of study in accordance with the description applied to it in the University's brochure for the academic year in which you begin the programme. However, the University reserves the right to:

- Make reasonable variations to the course (including, without limitation, the content and syllabus of the course, including changes to individual modules.*
- Discontinue the course or combine the course with another course, especially if it has insufficient numbers of students to be viable, if the University considers this reasonably necessary. If the University discontinues the course, it will use reasonable endeavours to provide you with a suitable alternative.*

The University welcomes comments on its programmes from students' parents and sponsors. However, the University's contracts with its students do not confer benefits on third parties for the purposes of the Contracts (Rights of Third Parties) Act 1999. A full copy of our terms and conditions can be found on our website at [brunel.ac.uk/about-this-website/terms](https://www.brunel.ac.uk/about-this-website/terms)